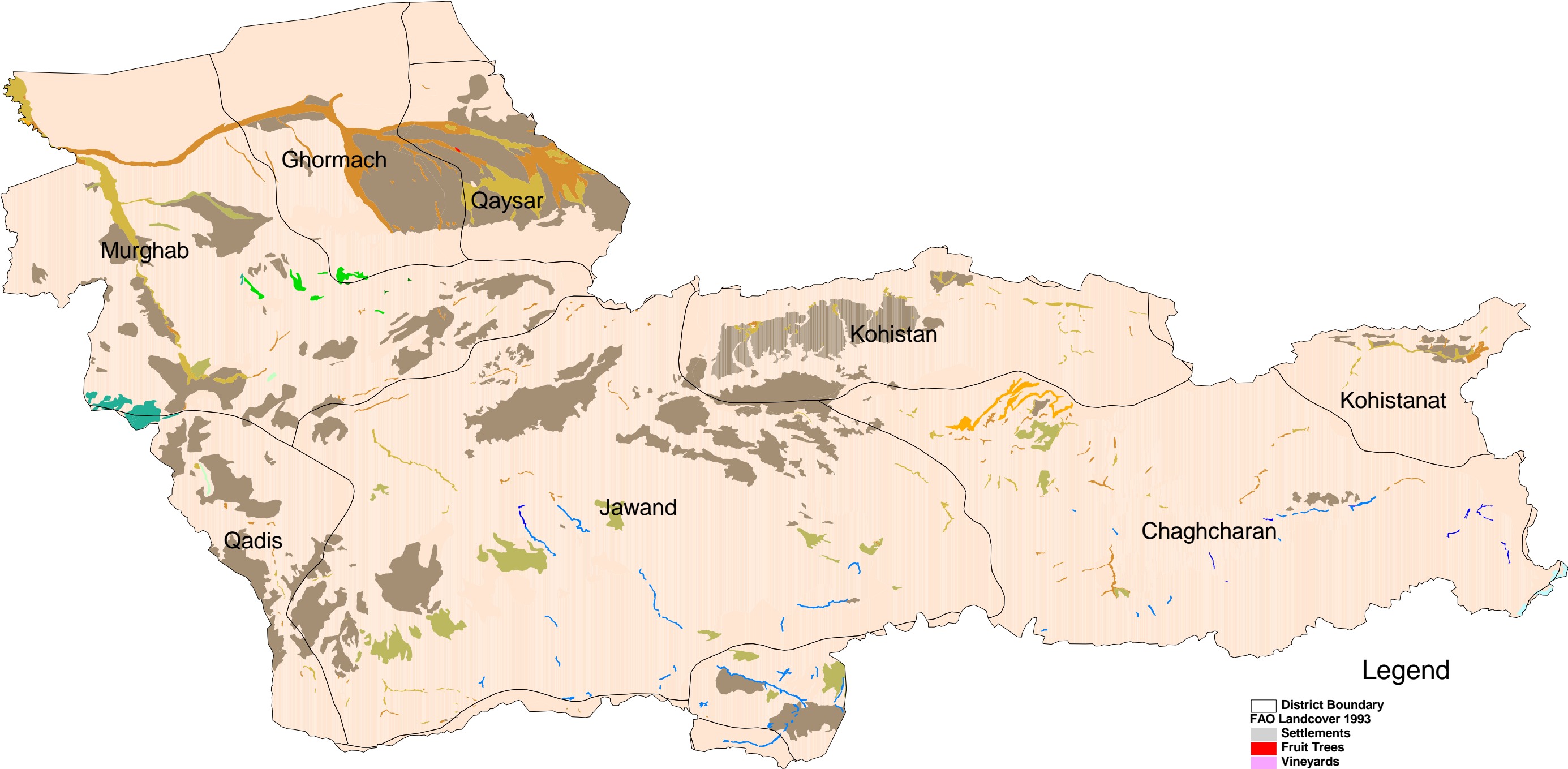


# Bala Murghab Watershed



## Legend

- District Boundary
- FAO Landcover 1993
  - Settlements
  - Fruit Trees
  - Vineyards
  - Gardens
  - Irrigated: Intensively Cultivated (2 Crops/year)
  - Irrigated: Intensively Cultivated (1 Crop/Year)
  - Irrigated: Intermittently Cultivated
  - Rainfed Crops (flat lying areas)
  - Rainfed Crops (sloping areas)
  - Pistachio Forest
  - Natural Forest (closed cover)
  - Natural Forest (open cover)
  - Degenerate Forest/High Shrubs
  - Rangeland (grassland/forbs/low shrubs)
  - Rock Outcrop / Bare Soil
  - Sand Covered Areas
  - Sand Dunes
  - Marshland Permanently inundated
  - Marshland Seasonal
  - Water Bodies
  - Permanent Snow

Note:  
The boundaries and names on the map do not  
imply official endorsement or acceptance by the  
United Nations.

for further information contact AIMS  
E-mail: [info@aims.org.af](mailto:info@aims.org.af)

